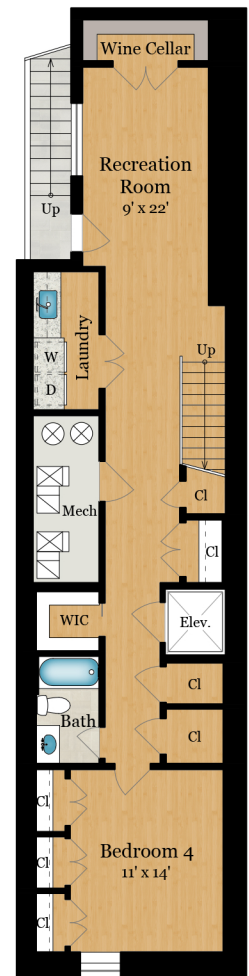
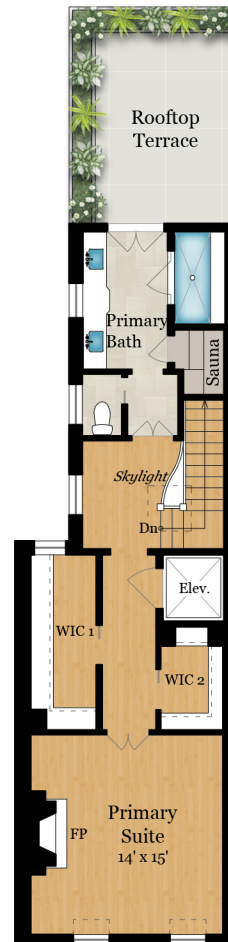
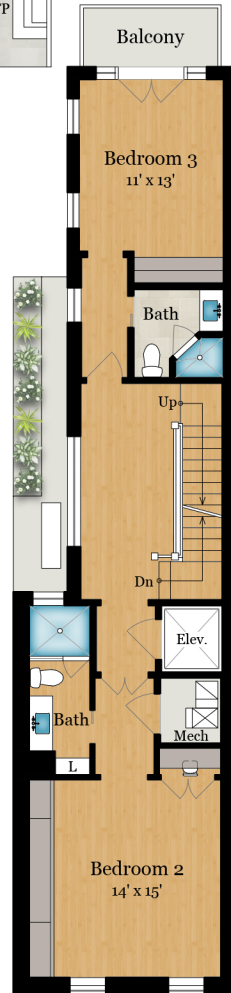
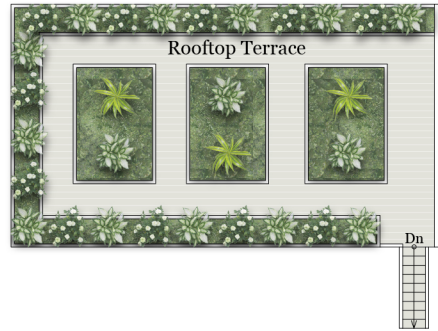


1619 19TH STREET, NW | WASHINGTON, DC 20009



DETACHED GARAGE
581 SQ FT



**Total Finished
Square Footage: 3,861 SQ FT**

Above-Grade: 2,799 SQ FT Below-Grade: 1,062 SQ FT

Plus 581 SQ FT Detached Garage

Plus 26 SQ FT Storage/Mech Room on Upper Level 1

Plus 75 SQ FT Storage/Mech Room on Lower Level

Calculated per ANSI Standard Z765-2003.

* Total Finished & Unfinished Square Footage: 4,543 SQ FT



1617 19TH STREET, NW | WASHINGTON, DC 20009



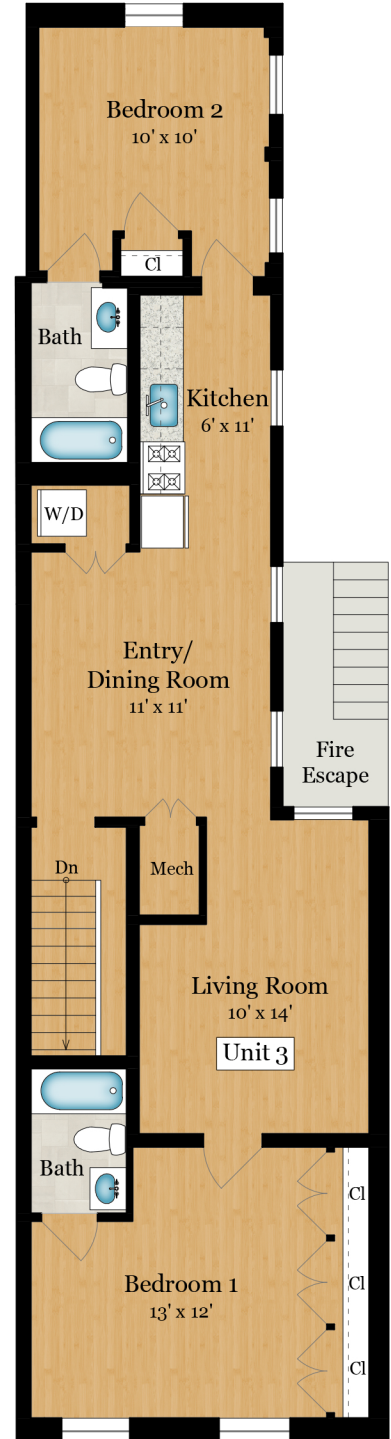
FIRST FLOOR

925 SQ FT
UNIT 1



SECOND FLOOR

925 SQ FT
UNIT 2



THIRD FLOOR

925 SQ FT
UNIT 3

Total Square Footage: 2,775 SQ FT

Calculated from outside face of exterior walls.

